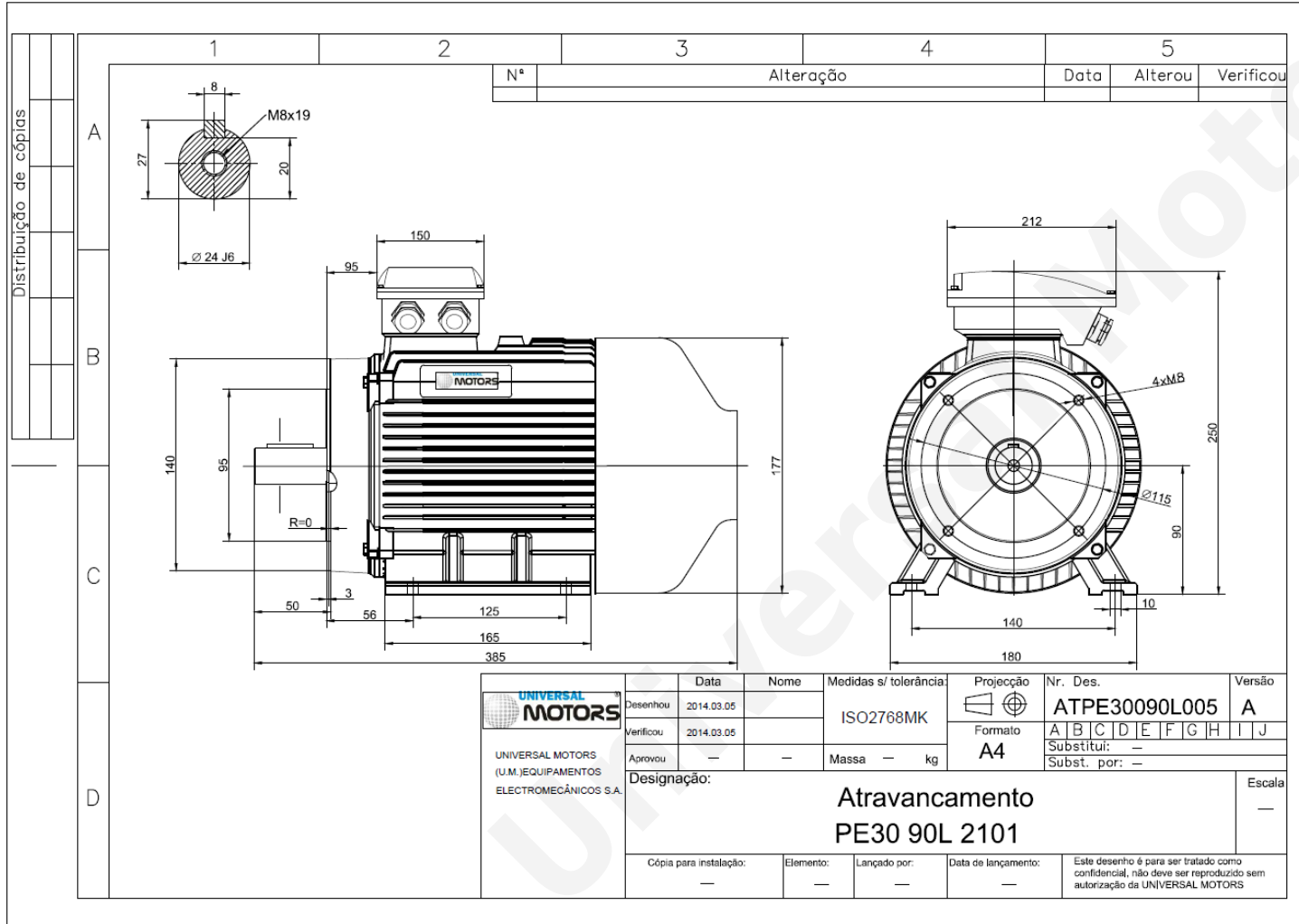


TECHNICAL DATA

Three Phase Electric Motors - Cast Iron Frame
 PE30 90 L 2 IE3
 2.2 kW / 3 Cv
 2890 RPM



Motor type:	PE30 90 L 2 IE3
Output:	2.2 kW / 3 Cv
Speed (min ⁻¹):	2890 RPM
Frequency:	50 Hz
Voltage:	400 V
Current:	4.4 A
Power factor (Cos Ø):	0.85
Poles:	2
Insulation class:	F
Temperature rise Class:	B
Efficiency 50%:	85.4 %
Efficiency 75%:	86.7 %
Efficiency 100%:	86.1 %
Torque:	7.3 N.m
Tstarting/Tnominal:	2.2
Istarting/Inominal:	7.6
Tmaximum/Tnominal:	2.3
Noise:	67 Db(A)
Weight:	33 Kg
Bearing DE:	6205 2Z C3
Bearing NDE:	6204 2Z C3

Regime - S1

Altitude - 1000m

Environment Temperature - 40°C

CONTACTS:

UNIVERSAL MOTORS Tel: +351 252 299 080
 Rua de São Brás,745 Fax: +351 252 299 089
 4480-782 VILA DO CONDE Mail: geral@universalmotors.pt

* References applied only in the UK